

**GLAZING**  
**VISION**  
the glass skylight company







## the glass skylight company

Glazing Vision are technical experts in the design and manufacture of architectural glass skylights, we are on the cutting edge of skylight design and our products can be found on rooftops across Europe, Australia and the United States.

For almost 30 years Glazing Vision has been designing and manufacturing custom glass skylight systems for a uniquely diverse customer base from our design and manufacturing facility offering hand built solutions for all manner of applications including natural daylight, ventilation and access.

Our US team are based in Hartford, Connecticut, and project manage installations across the United States with high value projects in New York, Boston, San Francisco and even Hawaii.

We have installed our Skybox and Skydoor access skylights on multiple high specification residential developments in locations from Staten Island to the Bronx. Glazing Vision Inc have attained code compliance in all five New York boroughs and have received LPC sign off.

Our design ethos is: minimize framework, maximize daylight. Our designs focus on reducing the amount of framework and enhancing daylight and ventilation. We have invested heavily in improving our skylights thermal performance. All of our products are assembled in the factory and rigorously tested prior to dispatch.



flushglaze® the original flat glass skylight





## simplicity

The Flushglaze is simplicity itself, a minimalist fixed skylight with 'frameless' internal views designed to allow as much natural daylight into a room as possible.

The Flushglaze can be manufactured using a variety of custom glass specifications to suit your chosen application, typical variations include double glazed units utilizing tempered heat soak tested and heat strengthened laminated glass, triple glazed, and walkable specification glass suited to your required loadings.

Other options include acoustic glass for locations with high noise pollution, solar control and different types of privacy glass. All of our skylights also feature a low e coating.

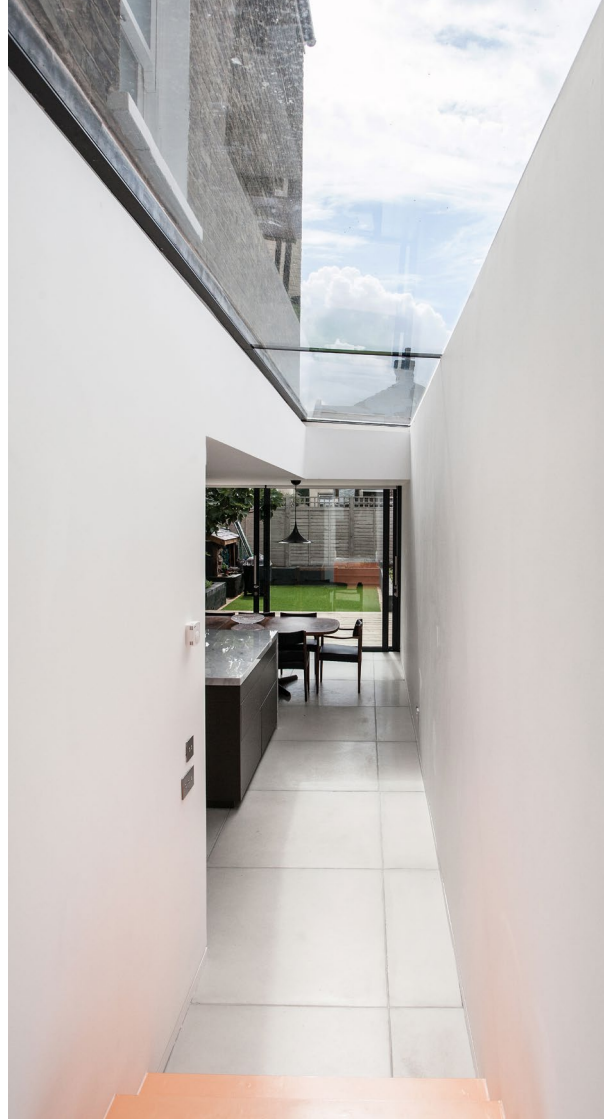




flushglaze® multipart skylight systems



## multipart system **silicone seals**



The beauty of the Flushglaze system is its flexibility. For larger areas of glazing, the glass panels can be linked together using a variety of different methods.

If you are working to a span up to 40", then a simple silicone seal is the only requirement to secure the panels together.

This is a great solution if you are looking to maintain the 'frameless' internal appearance of your skylight.





## multipart system aluminum angles



For larger spans you will need something stronger to safely support the joint between the glazed panels.

A Flushglaze multipart skylight can also be specified with back to back aluminium angles that form a 'T' shape for structural support.

This option tends to fit in very well with modern interiors, particularly when paired with bi-fold or sliding door systems. The internal angles can be powder coated to any RAL color of your choice.







RAL9010 Pure White (above) special order.



## multipart system glass fins

If you're looking to maintain an all glass finish, a Flushglaze multipart system can be specified using glass fins as structural support instead of aluminium angles.

These are a real architectural feature and offer a slightly more elegant finish.

The fins are heat soak tested, tempered laminated, for maximum strength and are supported at each end by stainless steel brackets.





## eaves system

The eaves system takes the Flushglaze concept one step further by allowing vertically glazed sections to be connected to overhead glazing.

In most cases, a silicone seal is all that's needed to bond these sections together.

The results are stunning.







## ridgeglaze system

Flushglaze is not just limited to flat roofs or a single pitch.

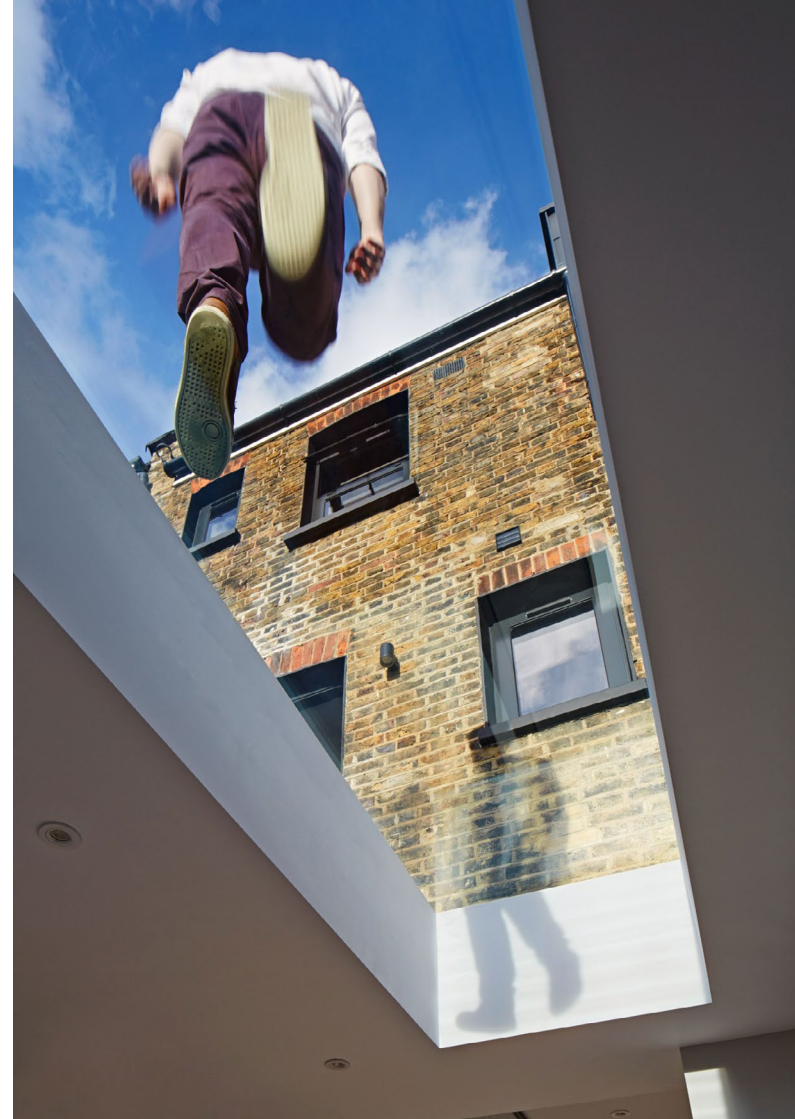
Glazing Vision have developed a 'ridgeglaze' system that is designed to be installed over the apex of your roof, increasing daylight and sky only views on either side.

This system can be specified as a solo version or a full modular arrangement (image left)





## walkable flushglaze



The versatility of the Flushglaze system is demonstrated perfectly in our walkable skylights.

These products can unlock the potential of a terrace or dark basement without sacrificing usable space.

Our standard glass specification is designed to withstand regular foot traffic in domestic applications, but we can also design and manufacture products for other applications such as public areas, commercial or heavy duty applications.





## walkable skylight **custom options**

As part of the Flushglaze range, our walkable skylights are available as standalone or modular systems which allow sections of glass to be fixed together, complete with their own structural support using aluminum back to back angles.

We can also provide a variety of glass finishes such as anti-slip designs for wet weather use, and custom screen printed borders designed to mask the visible part of your curb beneath. These units can also be specified with opaque privacy glass in a variety of designs.





roof windows for pitched roofs



## pitchglaze roof window

The Pitchglaze is a flush fit roof window designed to be installed in pitched roof applications.

It has been fully tested to AAMA/WDMA/CSA 101/1.S.2/A440-17 standards, which includes tests for air permeability, watertightness and wind resistance.

We have adopted our pioneering 'frameless' design ethos with this product, so that when installed, the building occupants can enjoy sky only views through the aperture, something not usually found with traditional roof windows.

Pitchglaze roof windows can be manufactured in much larger sizes than traditional roof windows.





## pitchridge roof window

The Pitchridge is a fixed product comprising two panes joined at the ridge using back-to-back angles and silicone seal.

The Pitchridge is designed to provide maximum daylight with minimum visible internal structure. Supplied in either portrait or landscape formats, it is designed to be installed in-plane on pitched roof applications.

The product is robust and long-lasting, boasting excellent thermal performance and air tightness, with a variety of optional extras such as special color and easy clean coating.





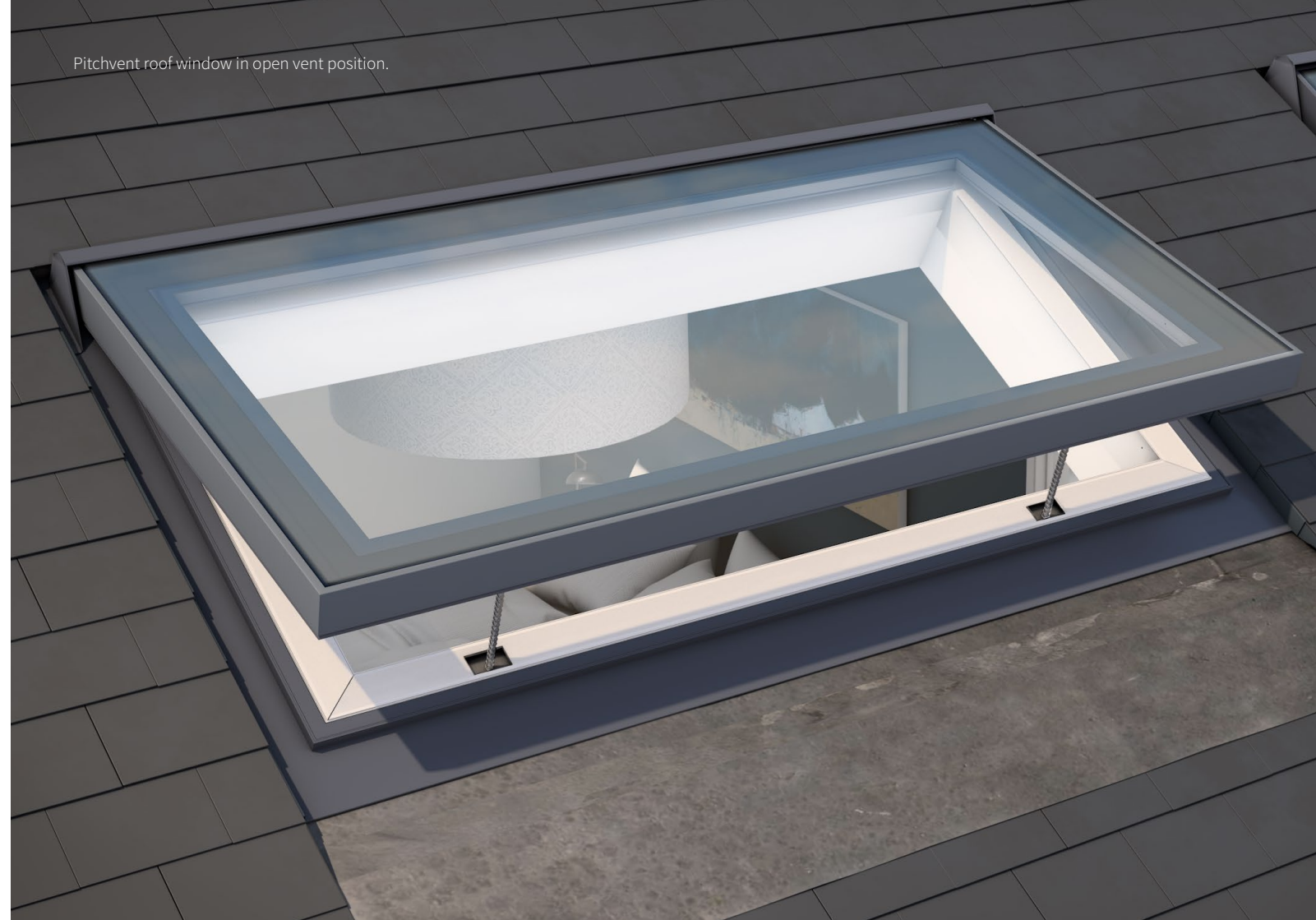
## pitchvent roof window

The Pitchvent is a ventilation roof window designed to be installed in pitched roof applications.

This unit is available as either a manually operated unit, using a screw jack and pole mechanism or as a chain actuated variant, supplied with one or two actuators, depending on specification.

When compared to traditional roof windows, the Pitchvent is available in much larger sizes, thus increasing the amount of natural ventilation in your building.

Pitchvent roof window in open vent position.





Pitchvent roof window in closed position.

Pitchvent roof windows are ideally suited to attic conversions where natural daylight and ventilation are harder to achieve.





feature skylights

Pyramid skylight  
integrated LED downlighter.



## pyramid & lantern

Considered an architectural feature as well as a skylight our pyramid and lantern products are a contemporary evolution of the traditional roof lantern.

Glass to glass joins feature extensively on these rooflights minimizing visible framework and maximizing the amount of natural daylight that will flood into your building.

Our pyramid rooflight features a built in downlighter in the apex cap providing a visual focal point in the evening. The lantern rooflight is available as a standard 12:12 pitch with glass to glass joins.

All framework is thermally broken and low emissivity glass used throughout for fantastic thermal performance.





hinged ventilation skylights





## visionvent<sup>®</sup> manual

Our VisionVent skylight range continues the design ethos of minimum framework, maximum daylight whilst offering a means of harnessing natural ventilation.

All of the VisionVent range benefit from dual color thermally broken framework with external profiles designed to complement the Flushglaze aesthetic.

The entry level skylight is a manually operated unit which is opened using a screw jack and telescopic pole mechanism. Opening size will vary depending on the size of skylight





## visionvent<sup>®</sup> chain drive

The VisionVent chain drive replaces the manual winding mechanism with an motorized chain driven unit.

This means that the skylight can be opened at the touch of a button without the need for a telescopic pole and hook.

In addition to this the VisionVent chain drive can be connected to an integrated thermostat and rain sensor unit which will open or close the unit based on user settings.





## visionvent® electric

The electrically operated VisionVent is our top of the range ventilation skylight.

Twin motors and mechanisms are hidden within the framework which keeps visual clutter to a minimum as well as making the mechanisms secure from attack when the unit is closed.

Security is further enhanced by the hinge design which runs along the entire width of the skylight. The hinge is part of the actual framework extrusion itself, not a separate mechanical fixing.

The opening lid section is supported on each side providing an extremely secure platform ensuring it remains completely stable when open. This also means that the electric VisionVent can be manufactured in larger sizes than the manual or chain actuated versions.

This skylight can be supplied with remote control and connected to accessories such as rain sensors, thermostats or home automation systems.





sliding skylights





## sliding over fixed

If space on the roof is tight the Glazing Vision 'sliding over fixed' skylight could be the best option.

This skylight is usually split into two sections, with one sliding pane of glass moving over a fixed section.

This configuration allows the maximum amount of light to be transmitted whilst opening up 50% of the overall footprint for ventilation.

Power is transmitted through a twin drive rack and pinion system with large diameter carriage wheels and hard anodized tracks to provide smooth travel when in motion.

The Sliding Over Fixed features a one way solenoid clutch and built in anti-lifting mechanism so the sliding section cannot be forcibly back driven.

Our Qualicoat approved polyester powder coated frame is supplied dual color as standard and is thermally broken using polyamide thermal breaks and closed cell PIR insulation.

Improved thermal performance can be achieved by specifying triple glazing which is now a standard option with the latest frame design.







## sliding over roof

For larger areas with sufficient unobstructed roof space for the sliding section you should consider a 'sliding over roof' skylight.

With this skylight, the glazed section slides as a single leaf and is supported by tracks on the roof itself in the open position. These form part of the framework and allow more scope in size and specification whilst maintaining the 100% clear opening.

The Sliding Over Roof includes all of the main security features of the Sliding Over Fixed and is operated using the same rack and pinion drive mechanism with one way clutch system.

All sliding skylights can be supplied with remote control and connected to a rain sensor, thermostat and home automation system.



open engineering

Custom sliding over roof unit provides a connection with the outdoors in this minimalist scheme





hinged access skylights





## skyhatch manual

The Skyhatch manual is our entry level access skylight and does not require any power, this version of the Skyhatch is used where access to the roof space is less frequent and is commonly installed for maintenance access.

The latest version features completely new gas strut opening mechanisms which now feature calibrated spring assisted openings, we have also added an extra grab handle and repositioned them so that they are mechanically fixed to the frame itself for added strength and durability.

For extra security and improved weather performance an all new multi point locking system has been developed so that the lid section is locked at either end of the skylight.

The extruded aluminum framework is thermally broken and supplied as standard in dual color Qualicoat approved powder coat.







## skyhatch **electric**

Skyhatch electric is a maintenance access unit primarily, and can also be stopped at any point to serve as a natural ventilation skylight.

The extruded aluminum framework is thermally broken and supplied as standard in dual color Qualicoat approved powder coat.

The skylight is operated by the intelligent LED wall switch supplied. Dual lift twin mechanisms provide reliable and stable support for the lid section when fully open.

As with all of our electronically controlled skylights, the Skyhatch offers full connectivity to rain sensor, thermostat and home automation systems and is available with remote control.





## skydoor®

Skydoor is our most popular hinged access skylight and is designed for day to day access to your roof space, ideal for roof decks.

Operated by our intelligent LED control switch, the unit will respond to both one touch and press and hold requests.

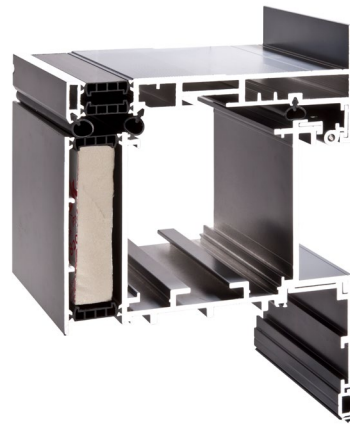
The Skydoor opens out to almost 90° at full travel by means of synchronised dual actuators but you can also stop the unit at any point mid travel which means it can be used as a natural ventilation skylight too.

Safety features include current override sensors, anti slip threshold tread plate and also a three point thru beam proximity detector system which will sense any movement beneath the opening section when in motion and prevent the lid from closing until the switch is engaged again.

The Qualicoat approved polyester powder coated framework is supplied dual color as standard and is thermally broken using a combination of polyamide breaks and closed cell PIR insulation







Thermally broken aluminum frame  
with polyamide thermal breaks and  
closed cell PIR insulation.







skybox access skylights







## free standing skybox

The Skybox unit is the perfect solution if you're looking for easy access to your roof deck. Operated at the touch of a button, the user simply climbs the stairs whilst the Skybox is retracting into its open position and then walks straight out onto the deck.

The specification of glazing used and physical structure of the design means that there is no additional requirement for balustrades around the skylight.

The Skybox can be manufactured in a variety of configurations but will generally consist of one sliding section of glass moving over a fixed section.

We manufacture two standard configurations, a freestanding box which features glazing on all sides and a three wall box which is designed to be shrouded by the walls of the building itself on three sides.







## three wall box

Our three wall Skybox configuration is one of the most popular and can offer an almost seamless integration into the fabric of your building.

We have manufactured and installed countless numbers of these units, predominantly in urban city environments where space is limited and home owners turn to maximizing their roof space.







## technical experts

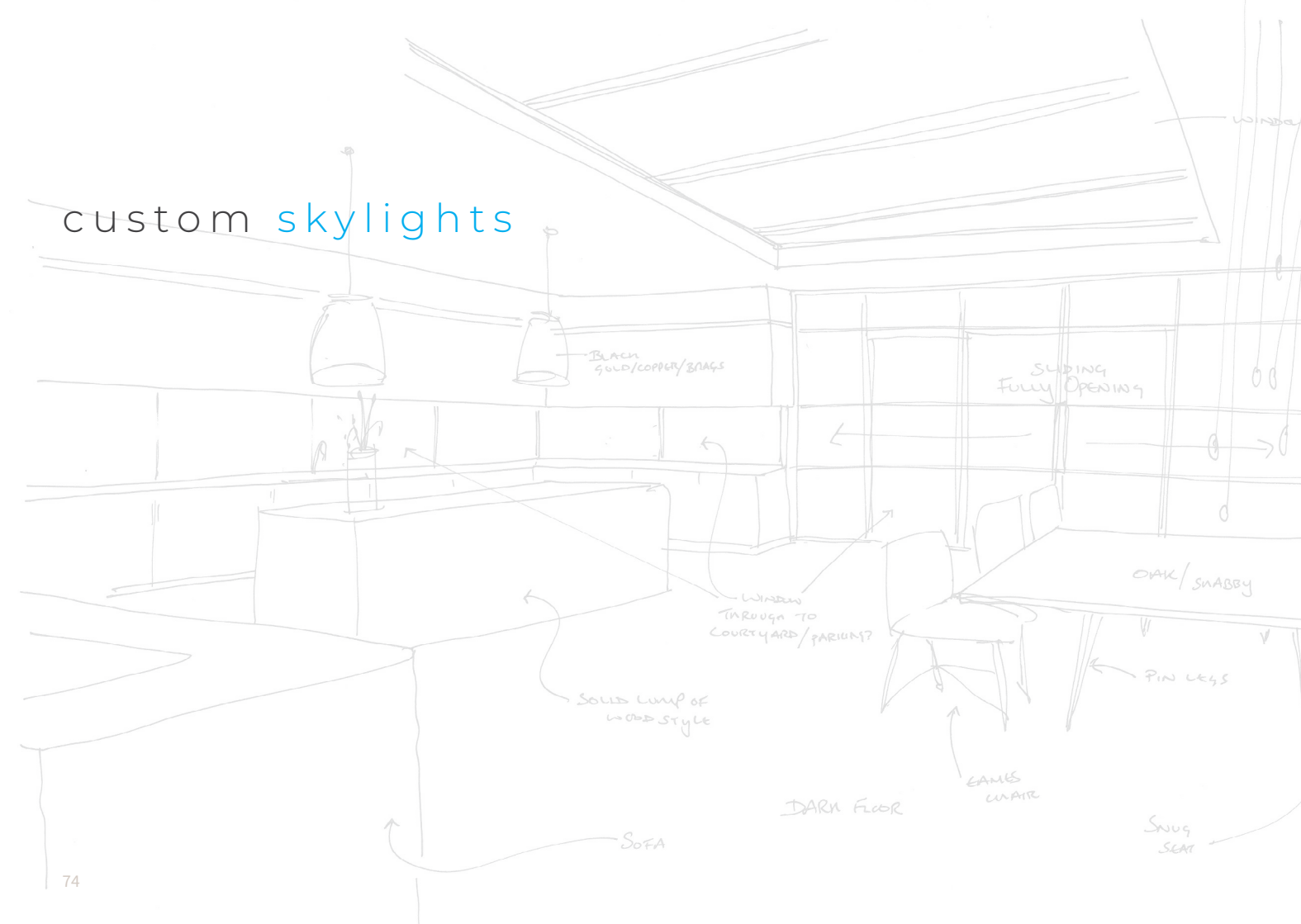
Research and Development is relentless and Glazing Vision are proud of the fact that we were the first UK company to introduce and develop simple, clean skylight designs for flat roofs. We now manufacture and install our products across Europe and the United States.

We never stop innovating, and since those initial products were launched almost 30 years ago, we have continued to bring exciting new ideas to market, leak proof skylights, hinged ventilation skylights, sliding units that provide 100% opening in your roof structure, access skylights such as our Skybox and more recently our incredibly popular Skydoor skylight.

Our relationship with the architectural community pushes us to do better and be more creative with what can be achieved, and we believe that Glazing Vision provides the most diverse range of skylight products anywhere in the world.

Sathish Nammi PhD from Cambridge University collaborated with Glazing Vision developing a methodology for accurately calculating thermal performance in skylights.

custom skylights







## design

Our entire range of skylights can be adapted and extended for your particular needs, but it might be that you have an unusual skylight idea in mind. You just need to talk to the right people to help it take shape.

Our design team has grown as demand for one off designs has increased, and we now employ an entire team of talented in-house CAD designers who specialize in custom skylight design. The type of project they work on can be something as straightforward as an unusual shaped fixed glass skylight, or just as often a complicated sliding skylight arrangement with a combination of fixed, moving and even stacking glazed sections within its frame.

## installation

Many of our products are designed to be fitted by tradespeople and DIY enthusiasts, all of the information required to install the products can be downloaded online from the Glazing Vision resource centre.

Some of our more advanced skylights require detailed set up to ensure optimum performance.

Our experienced project managers will work with your architect, builder or contractor to arrange a suitable time to get the skylight on site, fitted and commissioned with the minimum of disruption.

Having your skylight fitted by an approved Glazing Vision installer means you benefit from an extended guarantee, whatever the product.





## flawless finish

We are very proud of the fact that we have our own environmentally friendly Powder Coating Plant using a Chrome Free conversion coating pre-treatment process.

All in-house painted profiles undergo a vigorous series of tests in our own paint lab which has enabled us to achieve Qualicoat standards for our painting process.

We are an approved Qualicoat Applicator, licence no. 1017, and can thus pass on the full paint warranty from the manufacturers of the powder coat we use which is the Akzo Nobel Interpon D1036 or D2525 range. We are also approved to use Syntha Pulvin coatings, the premier architectural powder coatings brand in Europe.

syntha pulvin |





make your space work for **you**



## approved lunch and learn

Glazing Vision regularly deliver AIA approved learning lunch presentations to architectural practices across the US, keeping them informed about constantly changing skylight and glass technologies.

These seminars provide industry professionals the opportunity to learn about new concepts and understand how they might be implemented into their designs.

We also cover how regulatory requirements may affect the specification process and provide advice helping specifiers avoid problems on site and select the right skylight for their scheme.

Learn more at [glassskylights.com/lunch-learn](https://glassskylights.com/lunch-learn)



connect with us





Glazing Vision Inc

201 Locust Street  
Hartford  
Connecticut  
CT 06114

833-759-3667  
[info@glassskylights.com](mailto:info@glassskylights.com)  
[glassskylights.com](http://glassskylights.com)

